



AZOOKA FLUORS

FOR RESEARCH AND DIAGNOSTICS

● BROCHURE ●





What is tinto rang™?

tinto rang™ was crafted to solve the everyday issues of life-science researchers, who use carcinogenic and mutagenic dyes. It is a safe Minor Groove Binder that specifically binds to AT rich regions and does not distort DNA structure, like intercalating DNA stains such as Ethidium Bromide, SYBR Safe and SYBR Gold. Scientists working on molecular biology tools and DNA Sequencing experiments often have to switch between Gel Electrophoresis and PCR experiments. In this process, time is lost during handling, decontamination and disposal procedures while we use stains like EtBr , SYBR Safe, SYBR gold.

- Binds to DNA in 1 minute
- Detects upto 10 picograms
- Safe disposal

Why tinto rang™?

tinto rang™, currently the most prevalent and impressive universal solution for the major concerns faced by the scientists and educational professionals. It has been proved to be superior in terms of safety speed, sensitivity and preserving the sample for multi use. tinto rang™ was designed with speed in mind in order to create a toxic death for Ethidium Bromide.

Nucleic Acid Stains	tinto rang™	SYBR Safe	Ethidium Bromide
Safety	Food Grade safe	Carcinogenic, less Mutagenic	Carcinogenic, Mutagenic, Teratogenic
Speed/ Time	Binds to DNA in 1minute	20-40 minutes	20-40 minutes
Sensitivity	100pg	3ng	1-5ng
Binding Mode	Minor Groove Binder	Intercalator	Intercalator
ϵ (free) M-1cm-1	16000	Not Reported	5450
Quantum yield	0.95	0.7	0.2
PCR Inhibition	No	Yes	Yes



- CE certified
food grade
- Post stained in
1-5 minutes
- 100x more
sensitive
- Stable upto 150
days at room
temperature
- Eco-friendly
- Seamless with
prestaining and
poststaining
- No
Decontamination
Procedures
needed
- Saves costs on
carcinogenic dye
decontamination
devices
- Seamless across
gel imaging
systems
- Does not
inhibit PCR
- Compatible with
all downstream
applications
- Low melting
temperature
shift

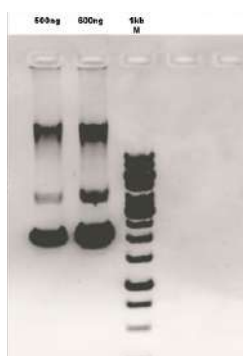
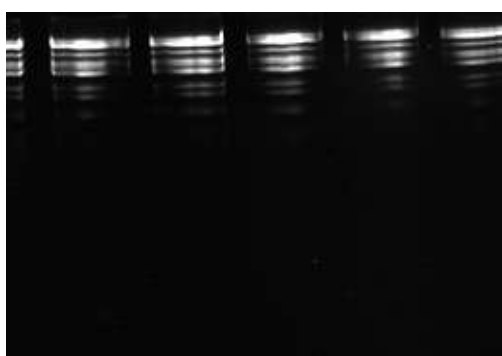


Fig. 1: DNA ladder stained with tinto rang on polyacrylamide (PAGE) gel

Fig. 2: Plasmid DNA stained with tinto rang

tinto rang™ for PCR and RT-PCR Applications :

tinto rang™ is an alternative to SYBR Green based kits and Master mixes. Azooka Products can be co-developed by any genomics kit manufacturer via Development and Site Manufacturing Licenses

Product listing:

Cat #	Product name	Unit size
AZ0015	tinto rang™ DNA	500µL (10,000x)
	tinto rang™ RNA	500µL (10,000x)

KALAM FLUOR



THE FAST FLUORESCENT PROTEIN STAINING KIT

What is Kalam Fluor?

Azooka's Kalam Fluor series are fluorescent protein stains that allow rapid and immediate detection of protein bands. No more time consuming staining and destaining procedures and view instant green coloured fluorescent bands under a UV illuminator. Kalam fluor is on par with Coomassie brilliant blue (CBB) in sensitivity. These stains are also compatible with existing gel documentation systems. The Kalam Fluor series product line has the Instant protein visualization kits. These kits are perfect for immediate band detection and visualization. View bands within minutes of completing the gel electrophoresis.

Note: The proteins cannot be further processed for blotting or sequencing purposes.

View protein instantly:

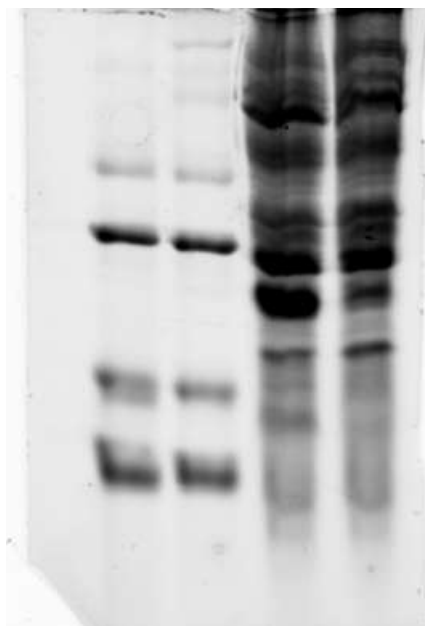


Fig. 3: Protein bands stained with Kalam Fluor



Product features:

Target Molecule	Protein
Detection Method	Fluorescence
Detection Time	1-5 mins
Detection Label	Post stain
Sensitivity (In gel)	Matches CBB
Device compatibility	Compatible with existing gel documentation devices

Product listing:

Cat #	Product name	Unit size
AZ0015	tinto rang™ DNA	500µL (10,000x)
	tinto rang™ RNA	500µL (10,000x)

ANO STAINS



48 HRS PHOTOSTABLE | NO ANTIFADE |
CELL MEMBRANE PERMEANT DYE

What is ANO stains?

Fluorescence detection, over the past decade, is an extremely sensitive technique that has revolutionized fields such as cell and molecular imaging, flow cytometry, biotechnology, genetic analysis and medical diagnostics. Live microscopic visualization of cells and cellular processes using fluorescent dyes reveal critical information on cell structure and function in real time that are more accurate than the snapshots provided by fixed cell imaging. Most of the dyes are impermeable through the cell membranes of viable cells while some dyes like Hoechst, DAPI, NucSpot are permeable. The availability of cell permeable stains have enabled live cell imaging and analysis, assisted by the new generation microscopes.

Zero toxicity:

100% safe for live cell imaging & for the scientists who use it. The only nuclear stain dye with food grade quality,

Zero damage:

ANO is positively charged with excitation maxima in the visible range. It causes no damage to the cells.

Zero antifade:

ANO cells are photostable upto 48hrs and do not require any antifade agents.

Zero background signal:

ANO binds to AT-rich region of DNA in minor groove. Only on binding to DNA the fluorescence increases.

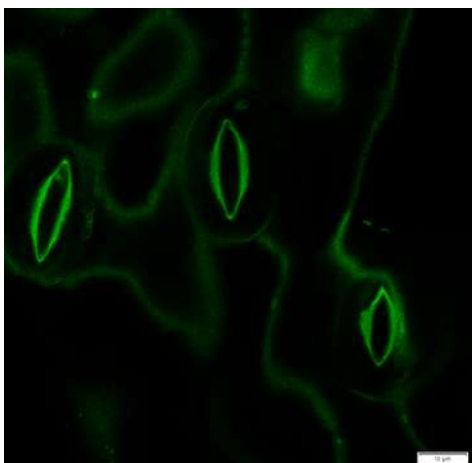


Fig. 4: Stomata stained with ANO plant series

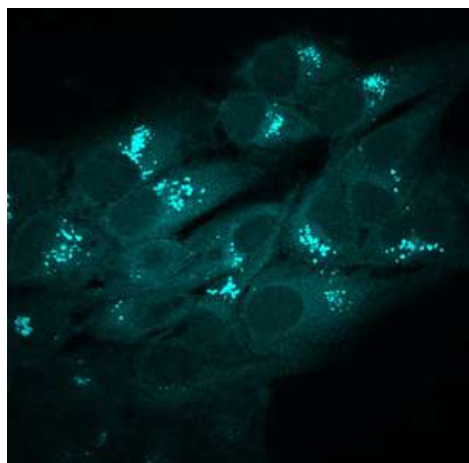


Fig. 5: HeLa cells stained with ANO

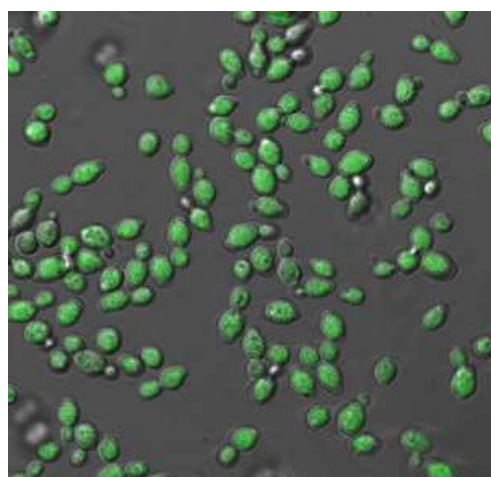
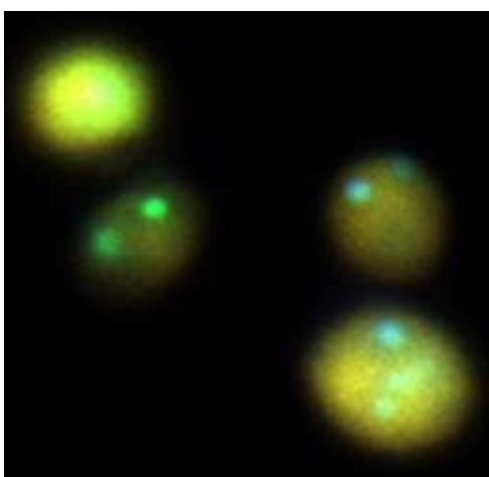


Fig. 6 & 7: Yeast cell and nuclei stained with ANO yeast staining kit

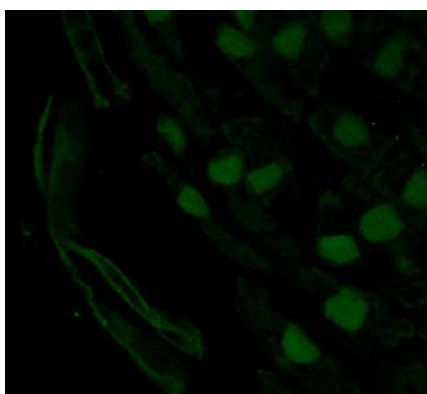


Fig. 8: Chromosome and nuclei stained with ANO

Product listing:

Cat #	Product name	Unit size
AZ0025	ANO Stains	500 μ L



Price quotes:

Product name	Quantity	Price
Azooka Dyes starter pack (tinto rang RNA/ DNA, Kalam Fluor, Ano stain)	1 Pack	INR 7,500 per Pack
tinto rang™ for DNA individual vial	1 Vial (10,000x 500µl)	INR 6,490 per Vial (INR 5500 + 18% GST)
tinto rang™ for RNA individual vial	1 Vial (10,000x 500µl)	INR 18,290 per Vial (INR 15500 + 18% GST)
Kalam Fluor for Protein Individual Bottle	1 Bottle	INR 199 per Bottle
ANO for Cell individual vial	1 Vial	INR 6,999 per Vial



AZOOKA DYES
PLACE YOUR ORDER NOW
OR VIEW OUR OTHER PRODUCTS AT



WWW.AZOOKA.LIFE
[INSTAGRAM.COM/AZOOKA.LABS](https://www.instagram.com/azooka.labs)
[LINKEDIN.COM/COMPANY/AZOOKALIFE](https://www.linkedin.com/company/azookalife)
[TWITTER.COM/AZOOKALIFE](https://twitter.com/azookalife)